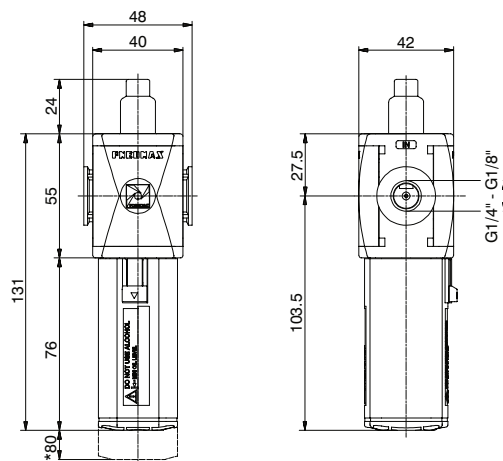


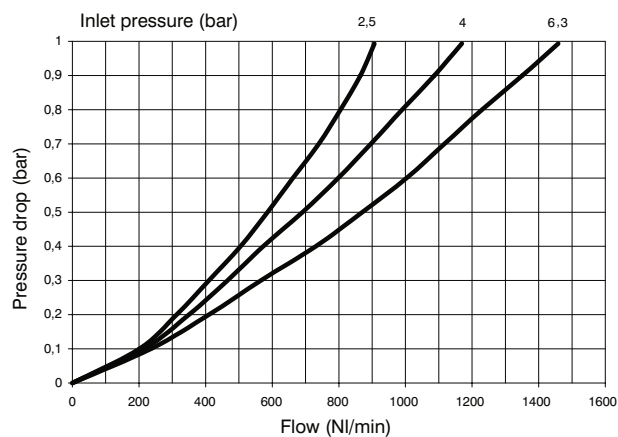
## Lubricator (L)



\*Bowl removal maximum height

Example : T171BL : size 1, Lubricator with Technopolymer threads, G1/4" connections

Flow rate curves



## Operational characteristics

- Oil mist lubrication with variable orifice size in function of the flow rate
- Oil quantity regulation mechanism and oil quantity visualization dome made of polycarbonate.
- Transparent bowl made off polycarbonate with bowl protection guard.
- Bowl assembly via bayonet type quick coupling mechanism with safety button.

## Note

Install as close as possible to the point of use  
Do not use alcohol, detergent oils or solvents.

## Technical characteristics

Connections	G 1/8" - G 1/4"
Max. inlet pressure	13 bar
Working temperature	-5°C +50°C
Weight with Technopolymer threads	gr. 110
Weight with threaded inserts	gr. 120
Indicative oil drop rate	1 drop every 300/600 NI
Oil type	FD22 - HG32
Bowl capacity	36 cm <sup>3</sup>
Assembly positions	Vertical
Max. fitting torque (with Technopolymer threads)	G1/4" = 9 Nm
Max. fitting torque (with threaded inserts)	G1/8" = 15 Nm G1/4" = 20 Nm
Min. operational flow at 6,3 bar	40 NI/min.

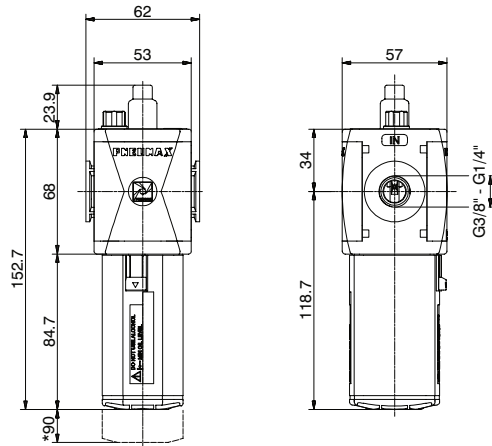
## Ordering code

V171CL2

VERSION
V N = Metal inserts
T = Technopolymer thread
CONNECTIONS
A = G1/8" (only for "N" version)
B = G1/4"
C = 1/4 NPT (only for "N" version)
BOWL OPTIONS
Z = Standard *
N = Nylon bowl
* no additional letter required

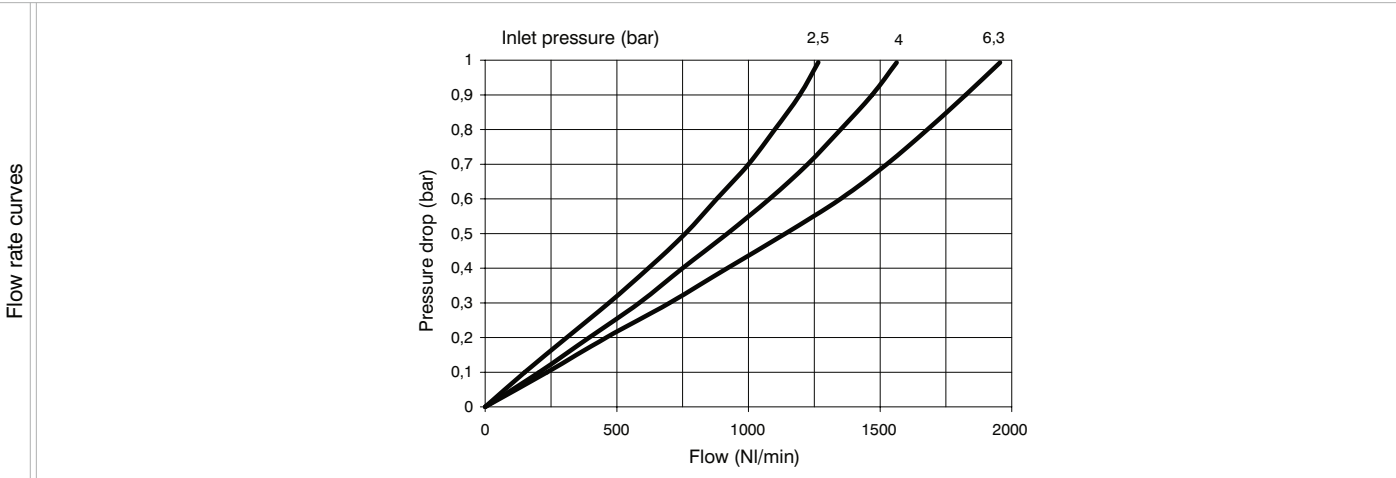


Lubricator (L)



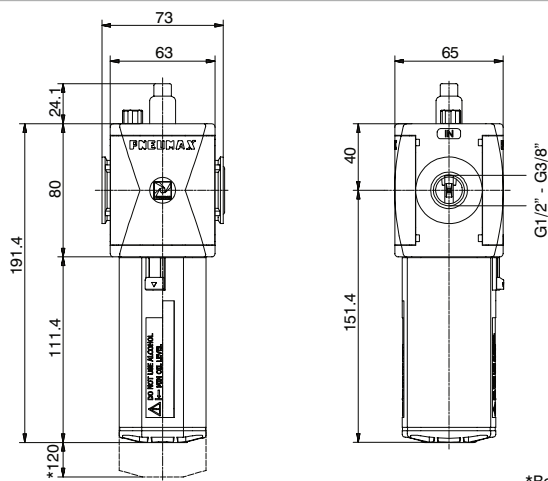
\*Bowl removal maximum height

Example : T172BL : size 2, Lubricator with Technopolymer threads, G3/8" connections



Operational characteristics	Technical characteristics		
<ul style="list-style-type: none"><li>- Oil mist lubrication with variable orifice size in function of the flow rate</li><li>- Oil quantity regulation mechanism and oil quantity visualization dome made of polycarbonate.</li><li>- Transparent bowl made off polycarbonate with bowl protection guard.</li><li>- Bowl assembly via bayonet type quick coupling mechanism with safety button.</li><li>- Oil filling plug</li><li>- Oil can be refilled with pressurized circuit.</li><li>- Available with electric min-level sensor N.O. or N.C. with connection for connector.</li><li>- For electrical connection use connectors type C1-C2-C3 (see sensors chapter in the catalogue).</li></ul>	Connections	G 1/4" - G 3/8"	Ordering code
	Max. inlet pressure	13 bar	
	Working temperature	-5°C +50°C	V172CLOZ
	Weight with Technopolymer threads	gr. 210	
	Weight with threaded inserts	gr. 220	VERSION V N = Metal inserts T = Technopolymer thread
	Indicative oil drop rate	1 drop every 300/600 NI	
	Oil type	FD22 - HG32	C CONNECTIONS A = G1/4" (only for "N" version) B = G3/8" C = 3/8 NPT (only for "N" version)
	Bowl capacity	70 cm³	
	Assembly positions	Vertical	OPTIONS A = Min. Oil level indicator Normally open C = Min. Oil level indicator Normally closed
	Max. fitting torque (with Technopolymer threads)	G3/8" = 16 Nm	
	Max. fitting torque (with threaded inserts)	G1/4" = 20 Nm G3/8" = 25 Nm	Z BOWL OPTIONS = Standard * N = Nylon bowl
	Min. operational flow at 6,3 bar	70 NI/min.	

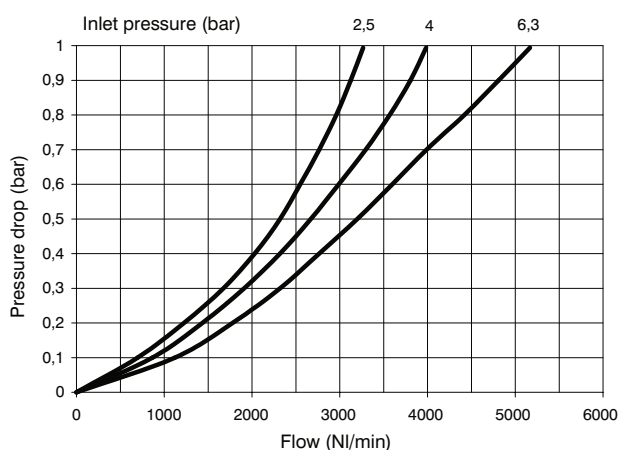
## Lubricator (L)



\*Bowl removal maximum height

Example : T173BL : size 3, Lubricator with Technopolymer threads, G1/2" connections

## Flow rate curves



## Operational characteristics

- Oil mist lubrication with variable orifice size in function of the flow rate
- Oil quantity regulation mechanism and oil quantity visualization dome made of polycarbonate.
- Transparent bowl made off polycarbonate with bowl protection guard.
- Bowl assembly via bayonet type quick coupling mechanism with safety button.
- Oil filling plug
- Oil can be refilled with pressurized circuit.
- Available with electric min-level sensor N.O. or N.C. with connection for connector.
- For electrical connection use connectors type C1-C2-C3 (see sensors chapter in the catalogue).

## Note

Install as close as possible to the point of use  
Do not use alcohol, deterging oils or solvents.

## Technical characteristics

Connections	G 3/8" - G 1/2"	Ordering code
Max. inlet pressure	13 bar	
Working temperature	-5°C +50°C	V173CLO2
Weight with Technopolymer threads	gr. 290	
Weight with threaded inserts	gr. 310	VERSION
Indicative oil drop rate	1 drop every 300/600 NI	
Oil type	FD22 - HG32	CONNECTIONS
Bowl capacity	136 cm <sup>3</sup>	
Assembly positions	Vertical	OPTIONS
Max. fitting torque (with Technopolymer threads)	G1/2" = 22 Nm	
Max. fitting torque (with threaded inserts)	G3/8" = 25 Nm G1/2" = 30 Nm	BOWL OPTIONS
Min. operational flow at 6,3 bar	100 NI/min.	

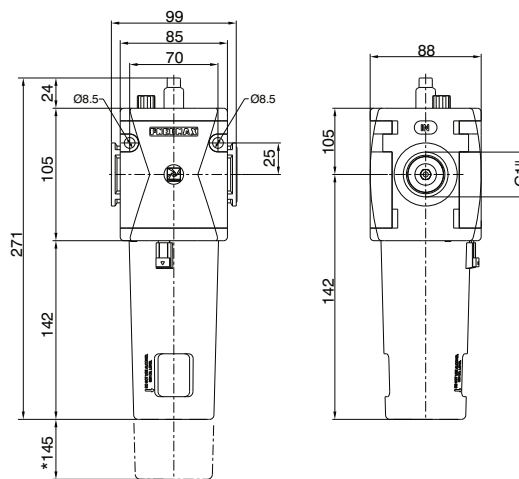
## Ordering code

V173CLO2

- VERSION
- N = Metal inserts
- T = Technopolymer thread
- CONNECTIONS
- A = G3/8" (only for "N" version)
- B = G1/2"
- C = 1/2 NPT (only for "N" version)
- OPTIONS
- A = Min. Oil level indicator Normally open
- C = Min. Oil level indicator Normally closed
- BOWL OPTIONS
- = Standard \*
- N = Nylon bowl

\* no additional letter required

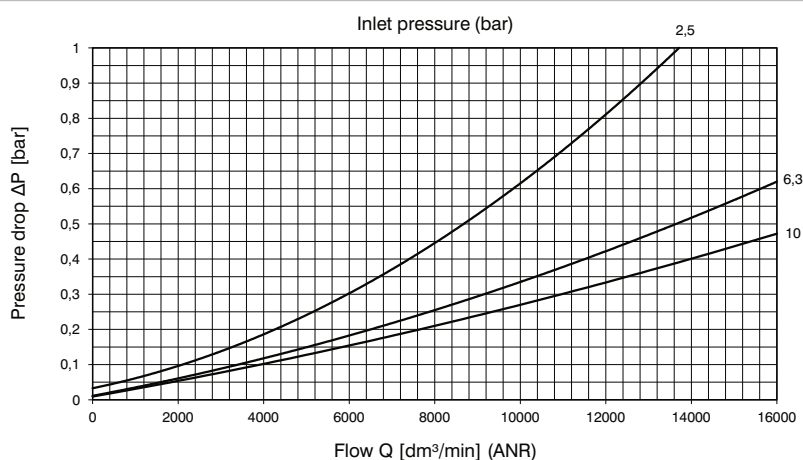
## Lubricator (L)



\*Bowl removal maximum height

Example : N174BL : size 4, Lubricator, G1" connections

## Flow rate curves



## Operational characteristics

- Oil mist lubrication with variable orifice size in function of the flow rate
- Oil quantity regulation mechanism and oil quantity visualization dome made of polycarbonate.
- Transparent bowl made off polycarbonate with bowl protection guard.
- Bowl assembly via bayonet type quick coupling mechanism with safety button.
- Oil filling plug
- Oil can be refilled with pressurized circuit.
- Available with electric min-level sensor N.O. or N.C. with connection for connector.
- For electrical connection use connectors type C1-C2-C3 (see sensors chapter in the catalogue).

## Note

Install as close as possible to the point o fuse  
Do not use alcohol, deterging oils or solvents.

## Technical characteristics

Connections	G1"	Ordering code
Max. inlet pressure	13 bar	
Working temperature	-5°C + 50°C	N174BL <sup>ⓐ</sup> <sup>ⓑ</sup>
Weight	1025 (gr)	
Indicative oil drop rate	1 drop every 300/600 NI	OPTIONS ⓐ A = Min. Oil level indicator Normally open ⓑ C = Min. Oil level indicator Normally closed
Oil type	FD22 - HG32	
Bowl capacity	360 cm <sup>3</sup>	BOWL OPTIONS ⓐ = Standard * ⓑ N = Nylon bowl
Assembly positions	Vertical	
Min. operational flow at 6,3 bar	100 dm <sup>3</sup> /min. (ANR)	* no additional letter required
Wall fixing screw	M8	