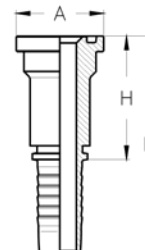


# SLANGEKOBLINGER, STANDARD

## S6 – SAE Flange, 6000 PSI

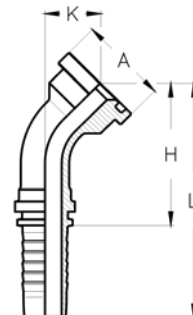
Varenummer	Slangestørrelse			Flange størrelse		Dimension (mm)		
	DN	Inch	Dash	Inch	mm	H	L	A
0222S60832	12,5	1/2"	-08	1/2"	31,8	47,0	80,0	31,8
0222S60841	12,5	1/2"	-08	3/4"	41,3	47,0	80,0	41,3
0222S61032	16	5/8"	-10	1/2"	31,8	48,0	84,0	31,8
0222S61041	16	5/8"	-10	3/4"	41,3	48,0	84,0	41,3
0222S61232	19	3/4"	-12	1/2"	31,8	50,0	90,5	31,8
0222S61241	19	3/4"	-12	3/4"	41,3	58,0	98,5	41,3
0222S61248	19	3/4"	-12	1"	47,6	58,0	98,5	47,6
0222S61641	25	1"	-16	3/4"	41,3	60,0	115,0	41,3
0222S61648	25	1"	-16	1"	47,6	64,0	115,0	47,6
0222S61654	25	1"	-16	1 1/4"	54,0	64,0	115,0	54,0
0222S62048	31,5	1 1/4"	-20	1"	47,6	67,5	125,0	47,6
0222S62054	31,5	1 1/4"	-20	1 1/4"	54,0	67,5	125,0	54,0
0222S62063	31,5	1 1/4"	-20	1 1/2"	63,5	67,5	125,0	63,5
0222S62463	38	1 1/2"	-24	1 1/2"	63,5	79,5	144,0	63,5
0222S62480	38	1 1/2"	-24	2"	79,4	79,5	144,0	79,4
0222S63280	51	2"	-32	2"	79,4	95,0	165,0	79,4



# SLANGEKOBLINGER, STANDARD

## S64 – SAE Flange, 6000 PSI, 45° Bøjning

Varenummer	Slangestørrelse			Flange størrelse		Dimension (mm)			
	DN	Inch	Dash	Inch	mm	H	L	K	A
0222S640832	12,5	1/2"	-08	1/2"	31,8	47,0	80,0	20,0	31,8
0222S640841	12,5	1/2"	-08	3/4"	41,3	53,0	86,0	26,0	41,3
0222S641032	16	5/8"	-10	1/2"	31,8	51,0	87,0	21,0	31,8
0222S641041	16	5/8"	-10	3/4"	41,3	57,0	93,0	26,0	41,3
0222S641232	19	3/4"	-12	1/2"	31,8	64,0	104,0	26,0	31,8
0222S641241	19	3/4"	-12	3/4"	41,3	64,0	104,0	26,0	41,3
0222S641248	19	3/4"	-12	1"	47,6	68,0	108,0	31,0	47,6
0222S641641	25	1"	-16	3/4"	41,3	79,0	130,0	31,0	41,3
0222S641648	25	1"	-16	1"	47,6	80,0	131,0	32,0	47,6
0222S641654	25	1"	-16	1 1/4"	54,0	85,0	136,0	37,0	54,0
0222S642048	31,5	1 1/4"	-20	1"	47,6	94,0	152,0	37,0	47,6
0222S642054	31,5	1 1/4"	-20	1 1/4"	54,0	93,0	151,0	37,0	54,0
0222S642063	31,5	1 1/4"	-20	1 1/2"	63,5	99,0	157,0	43,0	63,5
0222S642463	38	1 1/2"	-24	1 1/2"	63,5	111,0	175,0	44,0	63,5
0222S642480	38	1 1/2"	-24	2"	79,4	122,0	186,0	55,0	79,4
0222S643280	51	2"	-32	2"	79,4	147,0	217,0	58,0	79,4

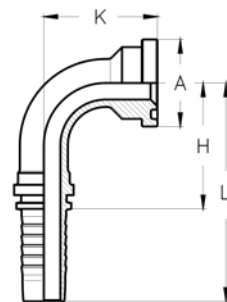


I udvalgte dimensioner kan 6000 PSI Flanger skaffes som 22,5°, 30°, 60° og 67,5° bøjninger. Data og dimensioner oplyses på forespørgsel.

# SLANGEKOBLINGER, STANDARD

## S69 – SAE Flange, 6000 PSI, 90° Bøjning

Varenummer	Slangestørrelse			Flange størrelse		Dimension (mm)			
	DN	Inch	Dash	Inch	mm	H	L	K	A
0222S690832	12,5	1/2"	-08	1/2"	31,8	38	71	40	31,8
0222S690841	12,5	1/2"	-08	3/4"	41,3	38	71	47	41,3
0222S691032	16	5/8"	-10	1/2"	31,8	45	81	42	31,8
0222S691041	16	5/8"	-10	3/4"	41,3	45	81	50	41,3
0222S691232	19	3/4"	-12	1/2"	31,8	55	95	54	31,8
0222S691241	19	3/4"	-12	3/4"	41,3	55	95	54	41,3
0222S691248	19	3/4"	-12	1"	47,6	55	95	60	47,6
0222S691641	25	1"	-16	3/4"	41,3	70	121	65	41,3
0222S691648	25	1"	-16	1"	47,6	70	121	66	47,6
0222S691654	25	1"	-16	1 1/4"	54,0	70	121	73	54
0222S692048	31,5	1 1/4"	-20	1"	47,6	85	142	80	47,6
0222S692054	31,5	1 1/4"	-20	1 1/4"	54,0	85	142	78	54
0222S692063	31,5	1 1/4"	-20	1 1/2"	63,5	85	142	86	63,5
0222S692463	38	1 1/2"	-24	1 1/2"	63,5	105	170	93	63,5
0222S692480	38	1 1/2"	-24	2"	79,4	105	170	109	79,4
0222S693280	51	2"	-32	2"	79,4	140	210	125	79,4

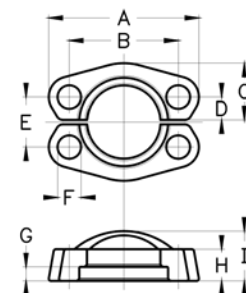


I udvalgte dimensioner kan 6000 PSI Flanger skaffes som 90° long-drop, samt som 22,5°, 30°, 60° og 67,5° bøjninger. Data og dimensioner oplyses på forespørgsel

# SLANGEKOBLINGER, STANDARD

## SAE Flangeclamp sæt, 6000 PSI

Varenummer	Flange størrelse		Dimension (mm)								
	Inch	mm	A	B	C	D	E	F	G	H	I
0222SF632	1/2"	31,8	56,3	40,5	22,6	8,0	18,2	9,0	7,2	16,0	22,0
0222SF641	3/4"	41,3	71,4	50,8	29,0	11,0	23,8	11,0	8,2	19,0	28,0
0222SF648	1"	47,6	80,9	57,2	33,8	13,0	27,8	13,0	9,0	24,0	33,0
0222SF654	1 1/4"	54,0	95,2	66,6	37,6	15,0	31,8	15,0	9,8	27,0	38,0
0222SF663	1 1/2"	63,5	112,7	79,3	46,5	17,0	36,5	17,0	12,0	30,0	43,0
0222SF680	2"	79,4	133,4	96,8	55,9	21,0	44,5	22,0	12,0	37,0	52,0



## O-Ringe for SAE flanger, 6000 PSI

Flangestørrelse	Varenummer NBR 70 shore	Varenummer NBR 90 shore	Varenummer Pur pakning
1/2"	0245 18.64 X 3.53	0245 18.64 X 3.53-90	0242SAE08
3/4"	0245 24.99 X 3.53	0245 24.99 X 3.53-90	0242SAE12
1"	0245 32.92 X 3.53	0245 32.92 X 3.53-90	0242SAE16
1 1/4"	0245 37.69 X 3.53	0245 37.69 X 3.53-90	0242SAE20
1 1/2"	0245 47.22 X 3.53		0242SAE24
2"	0245 56.74 X 3.53		0242SAE32

