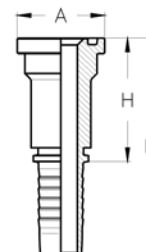


SLANGEKOBLINGER, STANDARD

S3 – SAE Flange, 3000 PSI

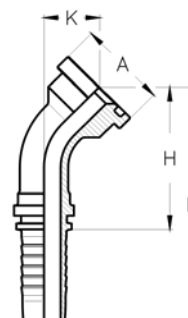
Varenummer	Slangestørrelse			Flange størrelse		Dimension (mm)		
	DN	Inch	Dash	Inch	mm	H	L	A
0222S30830	12,5	1/2"	-08	1/2"	30,2	47,0	80,0	30,2
0222S30834	12,5	1/2"	-08	5/8"	34,0	47,0	80,0	34,0
0222S30838	12,5	1/2"	-08	3/4"	38,1	47,0	80,0	38,1
0222S31030	16	5/8"	-10	1/2"	30,2	48,0	84,0	30,2
0222S31034	16	5/8"	-10	5/8"	34,0	48,0	84,0	34,0
0222S31038	16	5/8"	-10	3/4"	38,1	48,0	84,0	38,1
0222S31230	19	3/4"	-12	1/2"	30,2	49,5	90,0	30,2
0222S31238	19	3/4"	-12	3/4"	38,1	54,0	94,5	38,1
0222S31244	19	3/4"	-12	1"	44,5	54,0	94,5	44,5
0222S31638	25	1"	-16	3/4"	38,1	55,0	106,0	38,1
0222S31644	25	1"	-16	1"	44,5	55,0	106,0	44,5
0222S31651	25	1"	-16	1 1/4"	50,8	55,0	106,0	50,8
0222S32044	31,5	1 1/4"	-20	1"	44,5	62,0	120,0	44,5
0222S32051	31,5	1 1/4"	-20	1 1/4"	50,8	62,0	120,0	50,8
0222S32060	31,5	1 1/4"	-20	1 1/2"	60,3	62,0	120,0	60,3
0222S32460	38	1 1/2"	-24	1 1/2"	60,3	67,5	132,0	60,3
0222S32471	38	1 1/2"	-24	2"	71,4	67,5	132,0	71,4
0222S33271	51	2"	-32	2"	71,4	70,0	140,0	71,4
0222S33284	51	2"	-32	2 1/2"	84,1	80,0	150,0	84,1



SLANGEKOBLINGER, STANDARD

S34 – SAE Flange, 3000 PSI, 45° Bøjning

Varenummer	Slangestørrelse			Flange størrelse		Dimension (mm)			
	DN	Inch	Dash	Inch	mm	H	L	K	A
0222S340830	12,5	1/2"	-08	1/2"	30,2	47,0	80,0	20,0	30,2
0222S340834	12,5	1/2"	-08	5/8"	34,0	48,0	81,0	22,0	34,0
0222S340838	12,5	1/2"	-08	3/4"	38,1	51,0	84,0	24,0	38,1
0222S341030	16	5/8"	-10	1/2"	30,2	51,0	87,0	21,0	30,2
0222S341034	16	5/8"	-10	5/8"	34,0	53,0	89,0	22,0	34,0
0222S341038	16	5/8"	-10	3/4"	38,1	55,0	91,0	24,0	38,1
0222S341230	19	3/4"	-12	1/2"	30,2	64,0	104,0	26,0	30,2
0222S341238	19	3/4"	-12	3/4"	38,1	62,0	102,0	25,0	38,1
0222S341244	19	3/4"	-12	1"	44,5	64,0	104,0	27,0	44,5
0222S341638	25	1"	-16	3/4"	38,1	80,0	131,0	30,0	38,1
0222S341644	25	1"	-16	1"	44,5	77,0	128,0	28,0	44,5
0222S341651	25	1"	-16	1 1/4"	50,8	77,0	128,0	28,0	50,8
0222S342044	31,5	1 1/4"	-20	1"	44,5	94,0	152,0	37,0	44,5
0222S342051	31,5	1 1/4"	-20	1 1/4"	50,8	88,0	146,0	32,0	50,8
0222S342060	31,5	1 1/4"	-20	1 1/2"	60,3	88,0	146,0	32,0	60,3
0222S342460	38	1 1/2"	-24	1 1/2"	60,3	105,0	169,0	37,0	60,3
0222S342471	38	1 1/2"	-24	2"	71,4	105,0	169,0	37,0	71,4
0222S343271	51	2"	-32	2"	71,4	144,0	214,0	55,0	71,4
0222S343284	51	2"	-32	2 1/2"	84,1	142,0	212,0	53,0	84,1

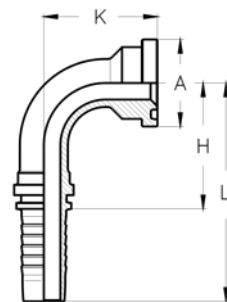


I udvalgte dimensioner kan 3000 PSI Flanger skaffes som 22,5°, 30°, 60°, 67,5° bøjninger.
Data og dimensioner oplyses på forespørgsel

SLANGEKOBLINGER, STANDARD

S39 – SAE Flange, 3000 PSI, 90° Bøjning

Varenummer	Slangestørrelse			Flange størrelse		Dimension (mm)			
	DN	Inch	Dash	Inch	mm	H	L	K	A
0222S390830	12,5	1/2"	-08	1/2"	30,2	38,0	71,0	40,0	30,2
0222S390834	12,5	1/2"	-08	5/8"	34,0	38,0	71,0	42,0	34,0
0222S390838	12,5	1/2"	-08	3/4"	38,1	38,0	71,0	45,0	38,1
0222S391030	16	5/8"	-10	1/2"	30,2	45,0	81,0	42,0	30,2
0222S391034	16	5/8"	-10	5/8"	34,0	45,0	81,0	44,0	34,0
0222S391038	16	5/8"	-10	3/4"	38,1	45,0	81,0	47,0	38,1
0222S391230	19	3/4"	-12	1/2"	30,2	55,0	95,0	54,0	30,2
0222S391238	19	3/4"	-12	3/4"	38,1	55,0	95,0	51,0	38,1
0222S391244	19	3/4"	-12	1"	44,5	55,0	95,0	54,0	44,5
0222S391638	25	1"	-16	3/4"	38,1	70,0	121,0	65,0	38,1
0222S391644	25	1"	-16	1"	44,5	70,0	121,0	61,0	44,5
0222S391651	25	1"	-16	1 1/4"	50,8	70,0	121,0	61,0	50,8
0222S392044	31,5	1 1/4"	-20	1"	44,5	85,0	142,0	78,0	44,5
0222S392051	31,5	1 1/4"	-20	1 1/4"	50,8	85,0	142,0	70,0	50,8
0222S392060	31,5	1 1/4"	-20	1 1/2"	60,3	85,0	142,0	70,0	60,3
0222S392460	38	1 1/2"	-24	1 1/2"	60,3	105,0	170,0	83,0	60,3
0222S392471	38	1 1/2"	-24	2"	71,4	105,0	170,0	83,0	71,4
0222S393271	51	2"	-32	2"	71,4	140,0	210,0	122,0	71,4
0222S393284	51	2"	-32	2 1/2"	84,1	140,0	210,0	120,0	84,1

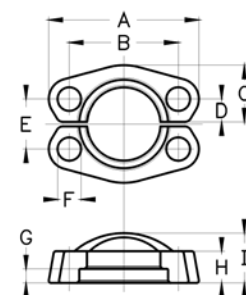


I udvalgte dimensioner kan 3000 PSI Flanger skaffes som 90° long-drop, samt som 22,5°, 30°, 67,5° bøjninger. Data og dimensioner oplyses på forespørgsel

SLANGEKOBLINGER, STANDARD

SAE Flangeclamp sæt, 3000 PSI

Varenummer	Flange størrelse		Dimension (mm)								
	Inch	mm	A	B	C	D	E	F	G	H	I
0222SF330	1/2"	30,2	54,0	38,1	21,8	8,0	17,5	9,0	6,2	13,0	19,0
0222SF338	3/4"	38,1	65,0	47,6	24,9	10,0	22,3	11,0	6,2	14,0	22,0
0222SF344	1"	44,5	69,8	52,4	28,2	12,0	26,2	11,0	7,5	16,0	24,0
0222SF351	1 1/4"	50,8	79,4	58,7	35,3	14,0	30,2	11,0	7,5	16,0	24,0
0222SF360	1 1/2"	60,3	93,7	69,9	40,1	17,0	35,7	13,0	7,5	16,0	25,0
0222SF371	2"	71,4	101,6	77,8	47,2	21,0	42,9	13,0	9,0	16,0	26,0
0222SF384	2 1/2"	84,1	114,3	88,9	53,1	24,0	50,8	13,0	9,0	19,0	38,0



O-Ringe for SAE flanger, 3000 PSI

Flangestørrelse	Varenummer NBR 70 shore	Varenummer NBR 90 shore	Varenummer Pur pakning
1/2"	0245 18.64 X 3.53	0245 18.64 X 3.53-90	0242SAE08
3/4"	0245 24.99 X 3.53	0245 24.99 X 3.53-90	0242SAE12
1"	0245 32.92 X 3.53	0245 32.92 X 3.53-90	0242SAE16
1 1/4"	0245 37.69 X 3.53	0245 37.69 X 3.53-90	0242SAE20
1 1/2"	0245 47.22 X 3.53		0242SAE24
2"	0245 56.74 X 3.53		0242SAE32

