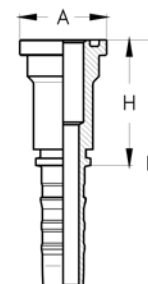


SLANGEKOBLINGER, ICS

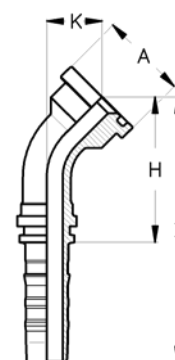
ICS S6 – SAE Flange, 6000 PSI

Varenummer	Slangestørrelse			Flange størrelse		Dimension (mm)		
	DN	Inch	Dash	Inch	mm	H	L	A
0222ICSS61241	19	3/4"	-12	3/4"	41,3	59	110	41,3
0222ICSS61248	19	3/4"	-12	1"	47,6	61	112	47,6
0222ICSS61641	25	1"	-16	3/4"	41,3	65	122	41,3
0222ICSS61648	25	1"	-16	1"	47,6	65	122	47,6
0222ICSS61654	25	1"	-16	1 1/4"	54,0	69	126	54,0
0222ICSS62048	31,5	1 1/4"	-20	1"	47,6	70	137	47,6
0222ICSS62054	31,5	1 1/4"	-20	1 1/4"	54,0	70	137	54,0
0222ICSS62063	31,5	1 1/4"	-20	1 1/2"	63,5	80	147	63,5
0222ICSS62463	38	1 1/2"	-24	1 1/2"	63,5	84	117	63,5
0222ICSS62480	38	1 1/2"	-24	2"	79,4	99	182	79,4
0222ICSS63280	51	2"	-32	2"	79,4	100	197	79,4



ICS S64 – SAE Flange, 6000 PSI, 45° Bøjning

Varenummer	Slangestørrelse			Flange størrelse		Dimension (mm)			
	DN	Inch	Dash	Inch	mm	H	L	K	A
0222ICSS641241	19	3/4"	-12	3/4"	41,3	66	117	28	41,3
0222ICSS641248	19	3/4"	-12	1"	47,6	68	118	29	47,6
0222ICSS641641	25	1"	-16	3/4"	41,3	81	137	31	41,3
0222ICSS641648	25	1"	-16	1"	47,6	80	136	30	47,6
0222ICSS641654	25	1"	-16	1 1/4"	54,0	80	136	30	54,0
0222ICSS642048	31,5	1 1/4"	-20	1"	47,6	96	163	37	47,6
0222ICSS642054	31,5	1 1/4"	-20	1 1/4"	54,0	93	160	34	54,0
0222ICSS642063	31,5	1 1/4"	-20	1 1/2"	63,5	94	161	35	63,5
0222ICSS642463	38	1 1/2"	-24	1 1/2"	63,5	112	195	40	63,5
0222ICSS642480	38	1 1/2"	-24	2"	79,4	115	198	43	79,4
0222ICSS643280	51	2"	-32	2"	79,4	150	247	56	79,4

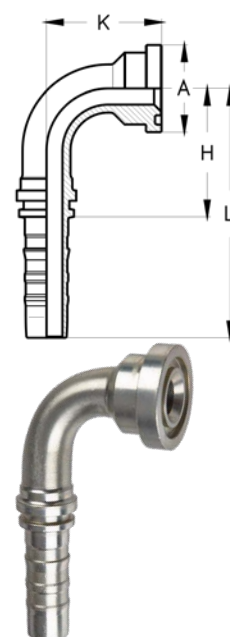


I udvalgte dimensioner kan ICS 6000 PSI Flanger skaffes som 22,5°, 30°, 60°, 67,5° og 135° bøjninger. Data og dimensioner oplyses på forespørgsel

SLANGEKOBLINGER, ICS

ICS S69 – SAE Flange, 6000 PSI, 90° Bøjning

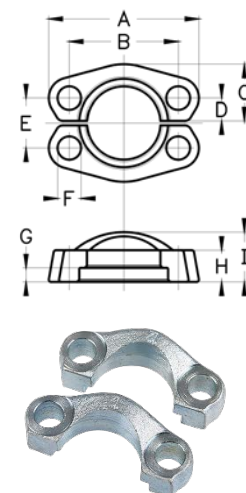
Varenummer	Slangestørrelse			Flange størrelse		Dimension (mm)			
	DN	Inch	Dash	Inch	mm	H	L	K	A
0222ICSS691241	19	3/4"	-12	3/4"	41,3	55	106	56	41,3
0222ICSS691248	19	3/4"	-12	1"	47,6	55	106	58	47,6
0222ICSS691641	25	1"	-16	3/4"	41,3	71	128	65	41,3
0222ICSS691648	25	1"	-16	1"	47,6	71	128	64	47,6
0222ICSS691654	25	1"	-16	1 1/4"	54,0	71	128	64	54,0
0222ICSS692048	31,5	1 1/4"	-20	1"	47,6	87	154	79	47,6
0222ICSS692054	31,5	1 1/4"	-20	1 1/4"	54,0	87	154	74	54,0
0222ICSS692063	31,5	1 1/4"	-20	1 1/2"	63,5	87	154	76	63,5
0222ICSS692463	38	1 1/2"	-24	1 1/2"	63,5	105	188	88	63,5
0222ICSS692480	38	1 1/2"	-24	2"	79,4	105	188	93	79,4
0222ICSS693280	51	2"	-32	2"	79,4	140	237	123	79,4



I udvalgte dimensioner kan ICS 6000 PSI Flanger skaffes som 90° long-drop, samt som 22,5°, 30°, 60°, 67,5°, 135° bøjninger. Data og dimensioner oplyses på forespørgsel.

SAE Flangeclamp sæt, 6000 PSI

Varenummer	Flange størrelse		Dimension (mm)								
	Inch	mm	A	B	C	D	E	F	G	H	I
0222SF632	1/2"	31,8	56,3	40,5	22,6	8,0	18,2	9,0	7,2	16,0	22,0
0222SF641	3/4"	41,3	71,4	50,8	29,0	11,0	23,8	11,0	8,2	19,0	28,0
0222SF648	1"	47,6	80,9	57,2	33,8	13,0	27,8	13,0	9,0	24,0	33,0
0222SF654	1 1/4"	54,0	95,2	66,6	37,6	15,0	31,8	15,0	9,8	27,0	38,0
0222SF663	1 1/2"	63,5	112,7	79,3	46,5	17,0	36,5	17,0	12,0	30,0	43,0
0222SF680	2"	79,4	133,4	96,8	55,9	21,0	44,5	22,0	12,0	37,0	52,0



O-Ringe for SAE flanger, 6000 PSI

Flangestørrelse	Varenummer NBR 70 shore	Varenummer NBR 90 shore	Varenummer Pur pakning
1/2"	0245 18.64 X 3.53	0245 18.64 X 3.53-90	0242SAE08
3/4"	0245 24.99 X 3.53	0245 24.99 X 3.53-90	0242SAE12
1"	0245 32.92 X 3.53	0245 32.92 X 3.53-90	0242SAE16
1 1/4"	0245 37.69 X 3.53	0245 37.69 X 3.53-90	0242SAE20
1 1/2"	0245 47.22 X 3.53		0242SAE24
2"	0245 56.74 X 3.53		0242SAE32

