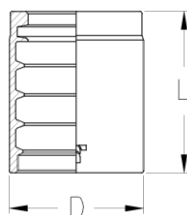


SLANGEKOBLINGER, STANDARD

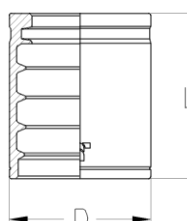
21 – Hylse for 1SC og 1SNK

Varenummer	Slangestørrelse			Dimension (mm)	
	DN	Inch	Dash	D	L
02222104	6,3	1/4"	-4	17,0	45,0
02222106	10	3/8"	-6	23,0	54,0



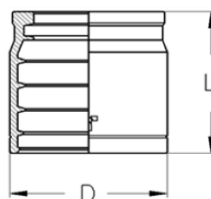
131 – Hylse for 1SN, 2SC og 2SNK

Varenummer	Slangestørrelse			Dimension (mm)	
	DN	Inch	Dash	D	L
022213103	5	3/16"	-03	19,0	24,0
022213104	6,3	1/4"	-04	20,0	27,0
022213105	8	5/16"	-05	22,0	27,5
022213106	10	3/8"	-06	24,5	30,0
022213108	12,5	1/2"	-08	28,0	32,5
022213110	16	5/8"	-10	32,0	35,0
022213112	19	3/4"	-12	36,0	40,0
022213116	25	1"	-16	45,0	50,0
022213120	31,5	1 1/4"	-20	54,0	50,0
022213124	38	1 1/2"	-24	62,0	55,0
022213132	51	2"	-32	76,0	60,0



132 – Hylse for 1SC, 1SN, 2SC og 2SNK

Varenummer	Slangestørrelse			Dimension (mm)	
	DN	Inch	Dash	D	L
022213204	6,3	1/4"	-04	20,5	26,0
022213205	8	5/16"	-05	22,5	26,0
022213206	10	3/8"	-06	24,5	26,5
022213208	12,5	1/2"	-08	28,5	28,5
022213210	16	5/8"	-10	32,0	31,0
022213212	19	3/4"	-12	36,0	35,0
022213216	25	1"	-16	45,0	44,0



SØRENSEN & KOFOED A/S

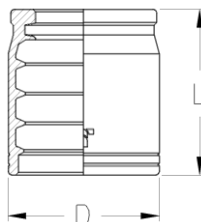
SMEDEHOLM 7-9 2730 HERLEV TLF: 44 92 10 88 WWW.SKDK.DK

Dimensioner kan ændres uden forudgående varsel

SLANGEKOBLINGER, STANDARD

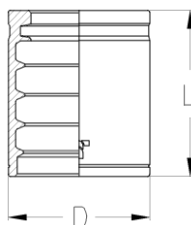
232 – Hylse for 2SN

Varenummer	Slangestørrelse			Dimension (mm)	
	DN	Inch	Dash	D	L
022223204	6,3	1/4"	-04	22,0	26,0
022223205	8	5/16"	-05	24,0	27,5
022223206	10	3/8"	-06	26,0	30,0
022223208	12,5	1/2"	-08	30,0	32,5
022223210	16	5/8"	-10	34,0	35,0
022223212	19	3/4"	-12	38,0	40,0
022223216	25	1"	-16	48,0	50,0
022223220	31,5	1 1/4"	-20	60,0	57,0
022223224	38	1 1/2"	-24	67,0	62,0
022223232	51	2"	-32	80,0	66,0



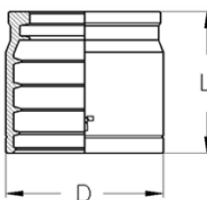
12 – Skrællehylse for 1SC, 2SC og 2SN samt renseslanger

Varenummer	Slangestørrelse			Dimension (mm)	
	DN	Inch	Dash	D	L
02221204	6,3	1/4"	-04	19,0	29,0
02221205	8	5/16"	-05	21,0	29,0
02221206	10	3/8"	-06	23,0	31,5
02221208	12,5	1/2"	-08	27,0	34,0
02221210	16	5/8"	-10	32,0	37,0
02221212	19	3/4"	-12	36,0	43,0
02221216	25	1"	-16	44,0	49,0



4A – Skrælfri hylse for 4SP og SPC3

Varenummer	Slangestørrelse			Dimension (mm)	
	DN	Inch	Dash	D	L
0222412A	19	3/4"	-12	43,0	41,0
0222416A	25	1"	-16	52,0	52,0



SØRENSEN & KOFOED A/S

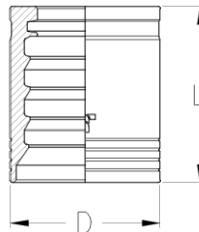
SMEDEHOLM 7-9 2730 HERLEV TLF: 44 92 10 88 WWW.SKDK.DK

Dimensioner kan ændres uden forudgående varsel

SLANGEKOBLINGER, STANDARD

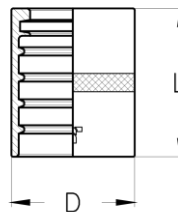
24 – Skrællehylse for 4SP og SPC3

Varenummer	Slangestørrelse			Dimension (mm)	
	DN	Inch	Dash	D	L
02222404	6,3	1/4"	-04	22,0	30,0
02222406	10	3/8"	-06	26,0	32,5
02222408	12,5	1/2"	-08	30,0	35,0
02222410	16	5/8"	-10	34,0	38,5
02222412	19	3/4"	-12	38,0	43,5
02222416	25	1"	-16	46,0	54,0
02222420	31,5	1 1/4"	-20	56,0	61,0
02222424	38	1 1/2"	-24	65,0	68,0



78 – Hylse for R7 og R8 thermoplastslange

Varenummer	Slangestørrelse			Dimension (mm)	
	DN	Inch	Dash	D	L
02227803	5	3/16"	-03	15,0	26,0
02227804	6,3	1/4"	-04	17,0	29,0
02227805	8	5/16"	-05	20,0	30,5
02227806	10	3/8"	-06	22,0	32,0
02227808	12,5	1/2"	-08	27,0	32,5
02227810	16	5/8"	-10	31,0	37,0



PMTH1 – Hylse for MTH1 thermoplastslange

Varenummer	Slangestørrelse			Dimension (mm)	
	DN	Inch	Dash	D	L
0226PMTH04	6,3	1/4"	-4	18,0	30,0
0226PMTH05	8	1/4"	-4	20,0	30,0
0226PMTH06	10	3/8"	-6	22,0	32,0

